

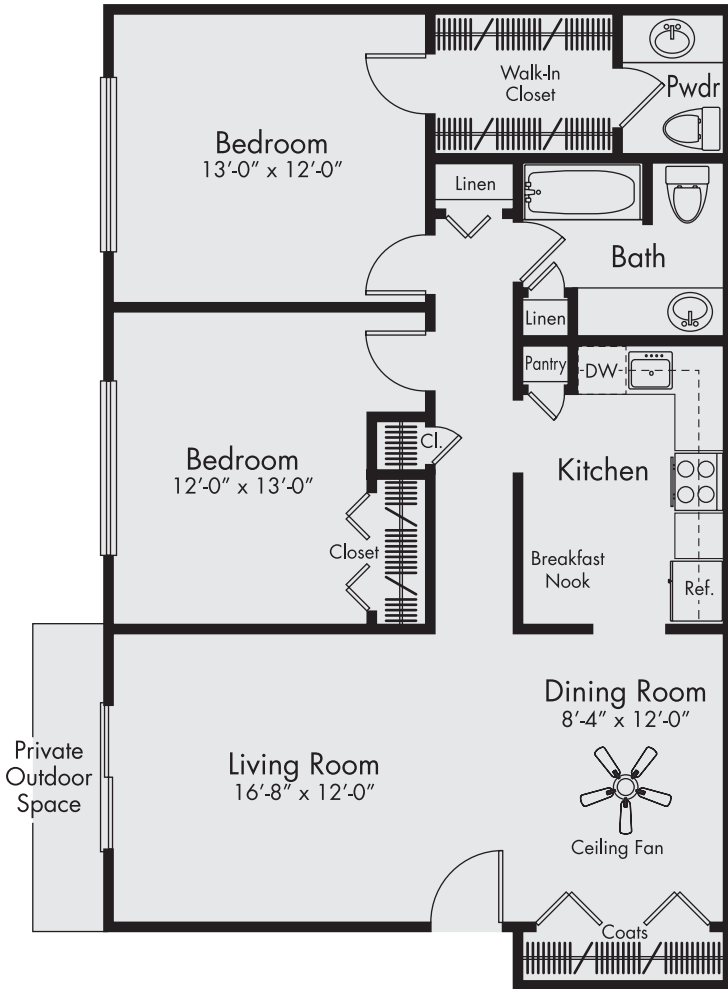
Waynewood APARTMENTS



THE PEMBROOK

2 Bedroom // 1.5 Bath // Approx. 1,000 sf

The Pembrook's foyer opens to reveal a huge living room with access to a private patio or balcony. The L-shaped, eat-in kitchen includes full appliances, pantry and breakfast nook. In addition to tons of storage and closet space, the Pembrook includes two bedrooms located at the back of the apartment home for additional privacy. The bedroom suite includes a half bath accessible through a walk-in closet. The second bedroom showcases a large closet and convenient access to the central bath.



6737 N. Wayne Road // Westland, Michigan 48185 // 734.326.8270 // Waynewood@maill.com // WaynewoodApts.com

We reserve the right to modify features, price, specifications and/or to change or discontinue models without notice or obligation. Floor plan dimensions are approximate. All information provided herein is subject to change at ownership's sole discretion. 060718

