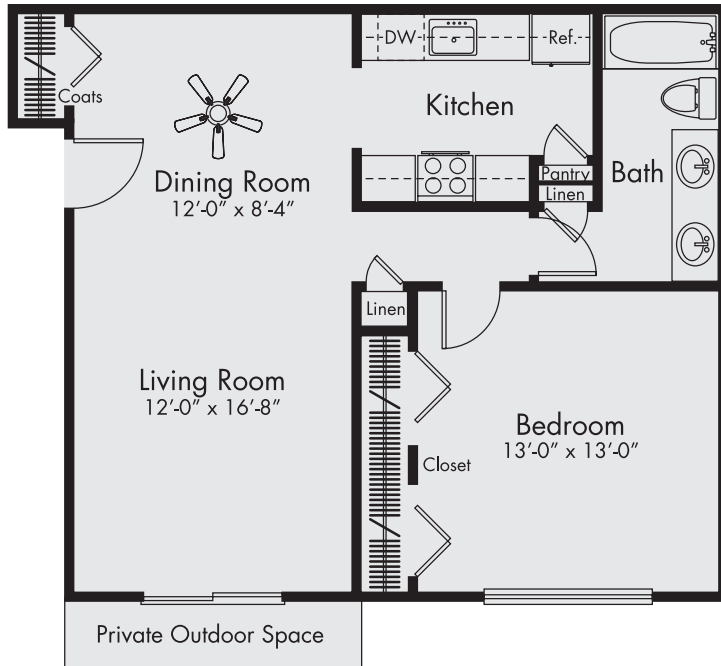


Waynewood APARTMENTS



THE WESTCOTT

1 Bedroom // 1 Bath // Approx. 700 sf

The Westcott's entry way leads into a large living room with a sliding glass doorwall opening to a private patio or balcony. The adjoining dining room is located off the kitchen with full appliances and pantry. The bedroom includes an impressive wall of closets and easy access to the spacious central bath with double sink vanity and convenient linen closet.

6737 N. Wayne Road // Westland, Michigan 48185 // 734.326.8270 // Waynewood@maill.com // WaynewoodApts.com

We reserve the right to modify features, price, specifications and/or to change or discontinue models without notice or obligation. Floor plan dimensions are approximate. All information provided herein is subject to change at ownership's sole discretion. 060718

